

Troubleshooting Guide

Problem: System periodically shuts down. Main disconnect switch is tripped.
System starts back up when disconnect switch is reset.

- Causes:**
1. Electrical connection between dust collector and generator or power source
 2. Low voltage from generator or power source
 3. Heat within electrical panel
 4. Weak overload in main disconnect switch

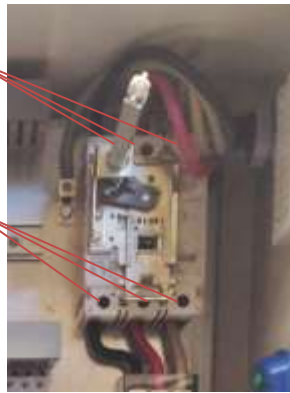
Solutions:

1. Wire Connection



Make sure the main power is disconnected before testing connection.

Use a 3/16" Allen wrench to make sure all 6 bolts that secure the main power wires to the disconnect switch are tight



Check to make sure that the wires have not been clamped on the outer casing on the wire rather than the bare wire. Allen bolts must have good contact with the bare wire



Check wire connection at the generator or power source

2. Generator Setup

Make sure the generator phase switch is set to 3 phase/ 480



Check the voltage meter and make sure that it reads 460V and 60 Hz



3. Check for internal fan in the control panel.
 - If there is not fan, set up a fan outside to blow against the dust collector to help cool the unit down.
 - A fan can also be added to the unit. Call RBW Enterprises for details. 770-251-8989.
4. After Main Disconnect Switch overload trips it becomes weaker. This will cause the power to turn off more frequently. To stop this from happening, a replacement switch is required.
 - Call RBW Enterprises to get a replacement switch (Part #: 787). 770-251-8989